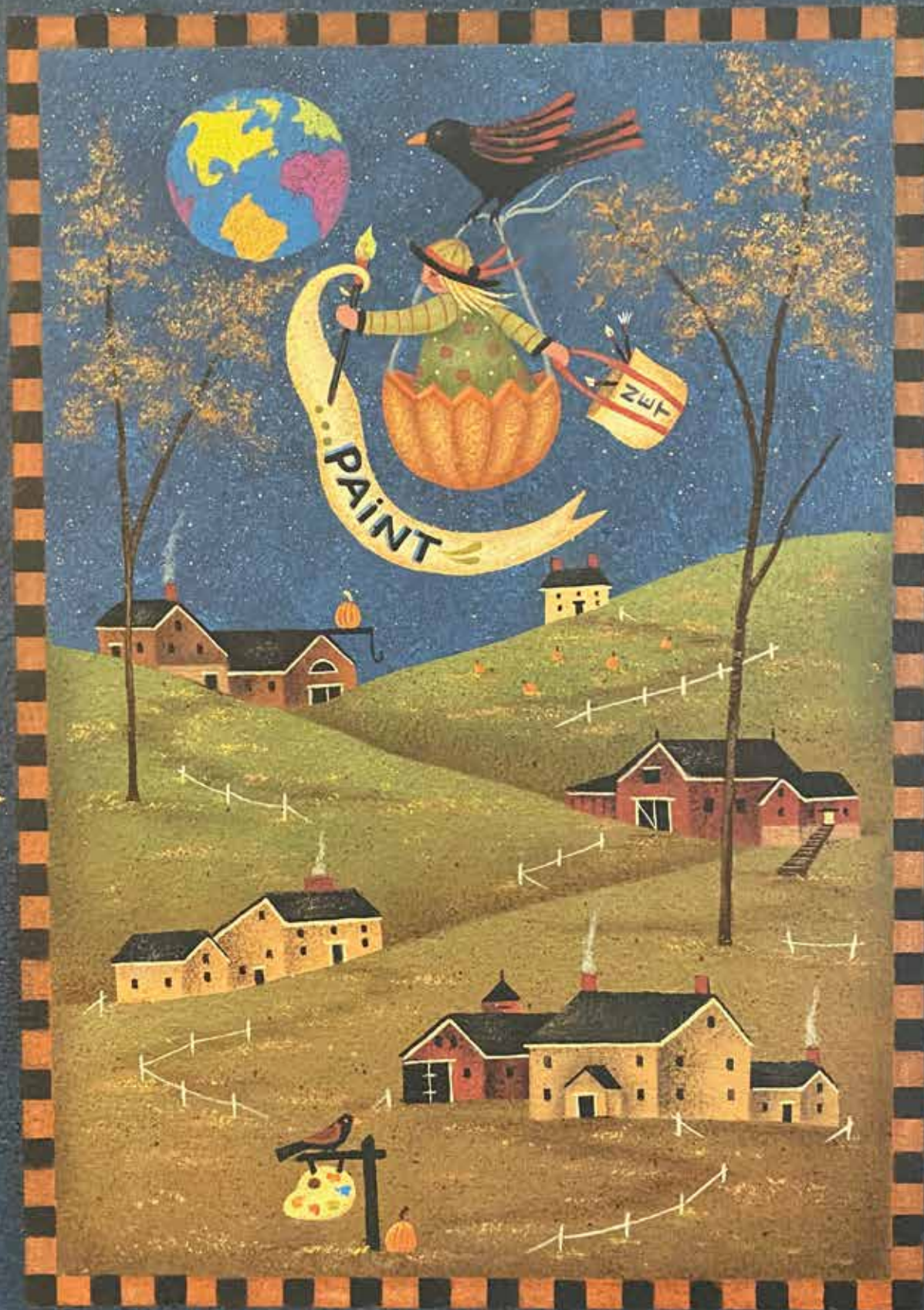


NEW ENGLAND TRADITIONS



...Transport yourself to another world.

Get Ready to Be Transported!

Dear Decorative Painting Friends,

Please join us! New England Decorative Artists Inc. and the New England Traditions Committee are excited to continue this artistic legacy and welcome you to **New England Traditions 2024!** Fall in New England is the perfect time to experience this premiere regional decorative painting event. Gather your friends and join us as we celebrate **our 26th year!**

Again, we are together **Under One Roof**, so you can paint and shop in your slippers to your heart's content! Our Exhibit Hall fills the Ballroom at the Best Western Royal Plaza with surfaces, patterns, brushes, gadgets, and inspiration. Your sneak peek is Thursday evening!

Cynthia Erekson, our convention artist, celebrates our history of catalog covers in her theme artwork for **Transport Yourself to Another World**. You'll find classes in a variety of mediums for all levels of painters from newbie to veteran. Our **Intro 101 Try Me! Classes** give new painters—or more experienced painters who want to try a new medium—the opportunity to learn in a nurturing, right-paced environment.

Get the week underway with our **Kick-off Class** on Tuesday evening as we create a NET 2024 treasure. Friday evening, our Italian Buffet is back offering a convenient way to grab a nice dinner before you mix and mingle at our friendly **GAME NIGHT** featuring Artists' Bingo with hand-painted prizes galore and fall snacks.

Don't forget to grab some **NET MEMENTOES** as you register—you'll have "presents" waiting for you when you arrive—what fun!

Until October, stay in touch with all things NET by visiting our website at www.newenglandtraditions.org. You can also find New England Traditions on Facebook...Follow us, Like, and Share!

Mark your calendar for **October 8–13** and come nurture your creativity...we're excited to share this art-full adventure with you!

In friendship, Happy Painting!

Robin Prout

New England Traditions 2024
chair@newenglandtraditions.org



WHAT'S INSIDE:

Schedule	page 3
Information	3–5
Housing	6
Classes	8–31
Merchandise	32
Basic Supplies by Medium	33
Special Supplies by Class	34–36
Volunteering	36
NEDA/NET Team	36
Registration Worksheet	37
Registration Check List	38
Teacher Index	39

NET 2024



TUESDAY—OCTOBER 8

- 1:00 p.m.–6:00 p.m. Teacher Class Sample Drop-off
- 2:00 p.m.–6:00 p.m. “Early Bird” NET Check-In, Registration, Class Sales, Merchandise Pick-up
- 6:00 p.m.–10:00 p.m. Kick-off Event with Cynthia Erikson

WEDNESDAY—OCTOBER 9

- 7:00 a.m.–9:00 a.m. Teacher Class Sample Drop-off
- 7:00 a.m.–6:00 p.m. Check-In, Merchandise Pick-up, Class Sales, Registration
- 7:00 a.m.–8:00 p.m. Class Project Display
- 7:00 a.m.–10:00 p.m. Volunteer Center
- 8:00 a.m.–6:00 p.m. Exhibitor Move-in & Set-up
- 8:00 a.m.–10:00 p.m. CLASSES

THURSDAY—OCTOBER 10

- 7:00 a.m.–4:00 p.m. Check-In
- 7:00 a.m.–1:00 p.m. Class Sales, Registration
- 7:00 a.m.–6:15 p.m. Class Project Display, Volunteer Center
- 8:00 a.m.–6:00 p.m. Exhibitor Move-in & Set-up
- 8:00 a.m.–6:00 p.m. CLASSES
- 10:00 a.m.–4:00 p.m. Demos
- 6:30 p.m.–9:00 p.m. SPENDERS AND VENDORS! Exhibit Hall Open for Registered Attendees

FRIDAY—OCTOBER 11

- 7:00 a.m.–4:00 p.m. Check-In
- 7:00 a.m.–1:00 p.m. Class Sales, Registration
- 7:00 a.m.–8:00 p.m. Class Project Display
- 7:00 a.m.–10:00 p.m. Volunteer Center
- 8:00 a.m.–10:00 p.m. CLASSES
- 9:30 a.m.–6:00 p.m. Exhibit Hall Open to Public
- 10:00 a.m.–4:00 p.m. Demos
- 5:00 p.m.–7:00 p.m. **Italian Buffet Dinner (ticket required)**
- 7:00 p.m.–9:30 p.m. **GAME NIGHT! (ticket required)**

SATURDAY—OCTOBER 12

- 7:00 a.m.–1:00 p.m. Check-In, Class Sales, Registration
- 7:00 a.m.–8:00 p.m. Class Project Display
- 8:00 a.m.–10:00 p.m. CLASSES, Volunteer Center
- 9:30 a.m.–6:00 p.m. Exhibit Hall Open to Public
- 10:00 a.m.–4:00 p.m. Demos
- 6:00 p.m.–8:00 p.m. Teacher Class Display Sample Pick-up

SUNDAY—OCTOBER 13

- 7:00 a.m.–8:00 a.m. Check-In, Class Sales, Registration
- 7:00 a.m.–12 noon Teacher Class Display Sample Pick-up
- 7:00 a.m.–12:30 p.m. Volunteer Center
- 8:00 a.m.–12 noon CLASSES

REGISTRATION POLICIES

Registration opens April 27, 2024, at 8:00 a.m. ET.

Please note: All Registration will be online using a credit or debit card as payment. Please use the link provided on our website at newenglandtraditions.org. Our secure registration site is managed by RegFox, a division of Webconnex, and will be monitored closely by NET. You will be able to register, select your classes, and purchase merchandise on this site. You will receive immediate confirmation of your purchases at the end of the online registration process. Use the registration form included in this catalog as a worksheet so you have all your information handy when you register online.

Online registration will be open through convention, though we ask that if you wish to add to your initial registration you contact Dorey Joy, our registration chair, and she will make those additions for you. Please contact Dorey via email at registration@newenglandtraditions.org if you have questions. A facts sheet regarding online registration can be found on our website.

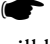
Full Registration for New England Traditions is \$90. Full registration includes a Conference Program book, admission to the Exhibit Hall including the opening Spenders and Vendors event, and all displays and demonstrations. It also qualifies registrants to enroll in classes and events offered Tuesday through Sunday. Individual fees for classes and events are not included in registration.

Partial Registration: Daily registration at the cost of \$35 per day allows you to register for classes and visit the Exhibit Hall on a specific day or days. Daily registration is available for Tuesday/Wednesday, Thursday, Friday, Saturday, and Sunday (Sunday only is \$12). It also includes a Conference Program book and admission to all displays and demonstrations on that day(s). We hope this flexible registration option will encourage even more painters to join us for New England Traditions 2024! **Please read the registration information carefully to register correctly for this option.**

Official confirmations will be emailed in September listing all classes and events for which you are registered. Be sure to print this out and carry this confirmation at all times during Convention, as it is your admission ticket for all classes for which you are registered. There is a \$2 charge for confirmation duplicates at Convention. A smile might get you a discount :)

Registration name badges will be issued to registrants and are required for admittance to classes, special events, the Exhibit Hall on Thursday night, and to purchase additional classes at the Class Sales table. You do not have to be a member of any painting organization to register. Every registrant will receive a raffle ticket for our Registered Attendees Raffle with a fabulous prize painted by Convention Artist Cynthia Erikson.

Please encourage your friends to stop by to see a great collection of painting designs, brushes, paints, surfaces, and more in our Exhibit Hall! Due to safety concerns, strollers, and wheeled painting carts are to be stored near the Exhibit Hall Admission table upon arrival. Wheeled shopping bags are allowed.

 **Attendee Cancellation Policies:** Individuals canceling will be refunded 50% of the registration fee paid, providing the request is made in writing to Registration Chair **Dorey Joy at registration@newenglandtraditions.org** before July 15, 2024. Project and class fees are only refundable until July 15, 2024, after which they cannot be refunded. After July 15, 2024, there will be NO refunds.

CONVENTION PARTICULARS

Special Events: We are pleased to offer these art-full experiences.

Tuesday Evening Kick-off Class, 6:00–10:00 p.m.!

Join Cynthia Erikson for a great way to kick-off our time together...

Friday Night Italian Buffet Dinner, 5:00–7:00 p.m.!

Back by popular demand, we are selling tickets for a yummy buffet in the hotel courtyard. Avoid the long waits at area restaurants on this busy holiday weekend. To-go option available. Delizioso!

Game Night! with Bingo, Friday, 7:00–9:30 p.m.


Hand-painted prizes and gift certificates galore to be won and treasured...feeling lucky?

Demonstrations: New techniques and products headline this always interesting and informative program. Learn from the talented artists who share their knowledge throughout the week. Demos will be held in the Hotel lobby. Please check the schedule in your program book when you arrive for the exact times and location.

Spenders and Vendors: Registered attendees get to kick off our NET 2024 Under-One-Roof shopping extravaganza Thursday evening from 6:30–9:00 p.m.! We're full up with new and returning vendors...booths are sold-out!

GAME NIGHT! Done with painting for the day, but not quite ready to call it a night? Join us for a relaxing evening of fun and friendship in Zachary's Restaurant from 7:00–9:30 p.m. (or any part thereof) to mix, mingle, and enjoy some friendly competition! Bring a deck of cards, your favorite board games, or enjoy our group rounds of Bingo. Hand-painted door prizes will be offered throughout the evening, and there will be a few surprises for lucky bingo winners. Bring your favorite beverage from the bar, and join us for snacks as we have some fun. You do not need to be registered for

NET to attend. Tickets must be purchased in advance through your registration, so don't delay and get ready to play! Contact Dorey Joy to purchase tickets for those who are not registered.

 **Have Extra Time? Be a Monitor!** Some teachers are in need of helpers as they set up their classrooms, check in students, pass out supplies, and walk samples around the room during class. Please check "yes" for class monitor when you register and our Volunteer Chairs will contact you to discuss the classes for which you are available. This is a rewarding way to help, so please sign up! All of your volunteer hours accumulate for the special hand-painted keepsake volunteer pin! This treasure marks six hours of volunteering at NET!

ABOUT OUR CLASSES

Included with each class photo is the class length, skill level, and medium used. It is necessary to be registered for New England Traditions in order to sign up for classes. The total fee assigned to each class includes teacher fees, surface and materials fees, and applicable Massachusetts sales tax.

Special Supplies Required: The special supplies required, listed on pages 34–35, are those the teacher has specifically requested for that class. Remember that you are also expected to bring the usual painting supplies for the medium in which you are working (see page 33). Only odorless solvents may be used in our classrooms. These are limited to small amounts stored in closed containers. It is suggested that you bring small containers to class to take extra paint with you for completing your projects.

Skill Levels: To assist you in selecting classes, each project has been assigned a skill level by the teacher.

Beginner: For students with knowledge of the fundamentals of the medium. Taught at a slow pace with teacher assistance.

Intermediate: For students with a good understanding of the fundamentals who are proficient in that medium. Taught at a moderate pace with some teacher assistance.

Advanced: For students with advanced skills in that medium. Taught at a brisk pace with minimal teacher assistance.

Intensive Study: Provides extended time to learn skills and techniques or a challenging experience for intermediate/advanced painters proficient in that medium. See class descriptions for specific information.

Use these guidelines when selecting classes, and please do not exceed your abilities. Do not enroll in an advanced class if you have been painting a short while unless you plan to audit the class. When you choose a medium with which you are unfamiliar, select a beginning project. Requesting classes beyond your skill level may create a hardship for the teacher and other students in the class. If you are an advanced teacher/student taking a beginner or intermediate class, please keep in mind the teacher is teaching that class at the level advertised only. We hope this information helps you make your class experience successful.

The Quilted Acorn

“REFLECTIONS OF THE PAST DESIGNS”

BY

★ CYNTHIA EREKSON ★

New England Folk Art at its finest!

Patterns · Unusual Original Surfaces · Doodads

Visit Cynthia and Sandi in booths 33 - 34

Saturday Special

Present this ad for a free gift with any \$25 purchase all day Saturday October 12th

www.reflectionsofthepastpatterns.com

978-314-1489

OF PARTICULAR NOTE:

Class Selection: Classes will be assigned on a first-reserved basis. You may register for as many classes as your schedule will allow. Please pay close attention to your selections as you register online.

Class Sales: New England Traditions does not repurchase classes or refund class or project fees if you are unable to attend. However, a resale bulletin board will be set up near Class Sales if you would like to attempt to sell your classes or purchase available classes. Class resale can only be initiated if that class is sold out, as the teacher has prepared for the registered number of attendees. While we work very hard to avoid canceling classes, we reserve the right to do so for any class with insufficient enrollment. Please don't delay in registering; this helps us prepare a great convention experience for you!

Surface Pick-up Notice: In the event you cannot attend or stay for a class for which you are registered, please pick up or arrange for the pick up of your surface and instructions from the classroom by the end of the first hour of class. This is the responsibility of the student, not NET. If you designate a friend to pick up your surface, that person must have your class confirmation sheet and a note from you or from the Registration Chair authorizing this action. To minimize class disruption, please attempt to pick up surfaces before class begins. Classrooms are open one half hour prior to the start of class. Once classes have been underway for one hour, those surfaces which haven't been picked up will be forfeited.

There is a **NO-SMOKING POLICY** in the classrooms and other meeting rooms being used for New England Traditions. The Best Western Royal Plaza Hotel is a smoke-free facility.

NO PHOTOGRAPHY OR VIDEOTAPING, including cell phone cameras, are allowed in the Exhibit Hall and Class Display area. If you would like to take photographs in your classroom, please ask the teacher for permission.

PAINTS, FINISHES, AND SOLVENTS will be used throughout the Hotel, and other locations appointed for classroom, demos, and exhibiting. Please evaluate your health status before choosing to participate in these portions of Convention. NET and New England Decorative Artists, Inc. assume no liability for health issues while using any painting-related products.

NEED A ROOMMATE? Check the appropriate box on your registration form and our Registration Chair will put you in touch with others who would like to share a room.

ACCESSIBILITY SERVICES

Scooter rentals may be obtained through **Boston Orthopedic & Respiratory**. Rates are dependent on individual needs. BO&R will deliver and pick up the scooters. To make your reservation, call Dnika at **857-719-8267** or **617-337-5133**. Mention you are with the New England Traditions convention to receive 10% off. Please let the hotel know of the drop-off schedule so the hotel staff can be prepared to receive your equipment.

Housing Information



Best Western Royal Plaza Hotel

181 Boston Post Road West, Marlborough, Massachusetts 01752

Directions: Take exit 63B (US-20 West toward Northborough) off I-495 (6 miles north of I-90 Mass Turnpike). Entrance to hotel is one mile ahead on the right.

**Reservations: (508) 460-0700 \$129 for singles or doubles
\$129 for triples
\$129 for quads**

When making reservations, **be sure to reference New England Traditions for the group rate.**

The cut-off for our room block rates will be **September 10, 2024.**

We anticipate a sold-out room block again this year, so reserve early!

Overnight stays include **FULL BREAKFAST BUFFET** (redeemed at Zachary's Restaurant in the hotel).

Roll-away bed rental is \$18 per bed per night, and is subject to prevailing state and city taxes.

Refrigerators and microwaves are in every guest room.

Checkout is by 11:00 a.m.—no exceptions! Check-in is 4:00 p.m.

The Royal Plaza Hotel is just minutes from I-495, I-290 and the Mass Turnpike/I-90.

Hotel rooms and features include voice mail and data ports in all rooms, complimentary high-speed wireless Internet, coffee/tea maker, iron, and free local calls. Check-in: 4 p.m. Check-out: 11 a.m. Parking is free.

Hotel amenities: All-Star Bar and Grill, Zachary's Restaurant, indoor heated pool, fitness room, game room, and free parking. For your convenience, a Grab and Go food area has been added near the lobby of the hotel. A number of casual dining restaurants are within one half mile, including Panera, Subway, Chick-fil-A, Chipotle, Longhorn Steakhouse, Ninety-Nine, 110 Grill, Indian, Japanese, Chinese, and Italian options, and more.

Shuttle Service: Knight's Airport Limousine shuttle service serving Logan International Airport (Boston), T. F. Green Airport (Providence, RI), and Amtrak Providence, RI, give group rates (the more who share a ride, the cheaper the rate per person). Call 1-800-822-5456 or make reservations online.

Twenty-four-hour service is available and all major credit cards accepted.

All hotel rates are subject to applicable state and local taxes.

Currently taxes are 11.7% and are subject to change.



New England Traditions—Our Proud History!

In 1997, decorative painter and teacher Pat Parker inspired nine chapters of the now dissolved Society of Decorative Painters in New England and the Albany, New York, area to join hands as the New England Chapters Council, which would go on in 1999 to produce the first large decorative painting convention in the Northeast. This event, New England Traditions, continues to draw 400+ attendees for 130+ classes taught by dozens of inspiring teachers, and a trade show featuring the best in decorative painting supplies and ideas. In 2022, NECC became New England Decorative Artists, Inc., which continues to celebrate decorative painting through our beloved convention held in Marlborough, Massachusetts, each October.

As we planned our first convention in 1999, Master Decorative Artist Arlene Beck of Duanesburg, New York, designed a beautiful wreath logo to present our annual event to the public, celebrating our history and many of the wonderful things that make our region such an inspiring place to live, work, and paint!

Throughout all of New England and eastern New York you can experience the splendor of fall foliage, especially the brilliant hues of maple trees, which make the leaves the perfect choice for the background of our wreath logo. Traveling through the wreath is like traveling through our hometowns: First there is the grasshopper weathervane, a traditional symbol of peace and prosperity atop Faneuil Hall in Boston, Massachusetts. Represented by the Shaker basket, the Shakers originally settled in the capital region of New York and then established communities throughout New England, the last one now in New Hampshire.

Traveling along any of our coastal areas, you will be awed by the nautical history; the picturesque Nubble Lighthouse in Maine is one of many lighthouses you will see. The strong history of the whaling and shipping industries is evident everywhere, especially when you see the beautiful old sea captains' homes in the coastal towns and islands of Rhode Island, Connecticut, New Hampshire, Maine, and Massachusetts. On any back road you will be delighted to find quaint towns with wonderful church steeples and old covered bridges. And don't forget Paul Revere's midnight ride and the steeple lanterns of Old North Church in Boston!

Some of the most collectible pottery comes from Bennington, Vermont. The strong Dutch influence in the Albany area is represented by the wooden shoe. There were several families of tinkers and tinsmiths in our region, especially in the Mohawk and Connecticut Valleys, and with the tin came "tole painting," thus the traditional coffee pot. Finally, along with beautiful maple leaves, almost every area in our region has great downhill skiing and other winter pursuits.

SPECIAL CONVENTION KICK-OFF EVENT

TUESDAY 6 p.m.–10 p.m. #999—4 hours



Fly Away!

with Cynthia Erekson



Beg./Int.—\$48.44

Acrylic

Wood-Framed Panel

5.75" x 7.75"

Crow 1" x 3"

frame, panel, stencils, sponge brush

Create this sweet keepsake of our week together employing Cynthia's clever faux finishing techniques and hand-cut stencils! FUN!!!

WEDNESDAY 8 a.m.–12 noon

#1010—4 hours



Patriotic Duo Carolyn Bacon

Intermediate—\$55.88

Acrylic, (2) Mounted Parchment Paper, 9" x 12" ea.

Learn to paint on paper using gel medium.

Most painters will leave class with two finished projects!

WEDNESDAY 8 a.m.–12 noon

#1020—4 hours



Rainy Night David Bailey

Beginner—\$61.19 Watercolor, Pebble Board, 15" x 20"

There is lots of color in this fun painting. Learn to lay in brilliant colorful background. You will love painting this Rainy Night scene.

WEDNESDAY 8 a.m.–12 noon

#1030—4 hours



I Believe Bobbie Campbell, CDA

Intermediate—\$69.19 Acrylic, Wood Plaque, 18" x 8"

Create dramatic contrasts on this vivid Christmas project without floating.

WEDNESDAY 8 a.m.–12 noon

#1040—4 hours



Jingle All the Way Annamarie Oke

Beginner—\$53.75

Acrylic, Metal Pizza Tray incl. stencil, 13"

Pizza pans are a fun surface to paint on when sealed correctly... these can be hung on any door using a large binder clip.

WEDNESDAY 8 a.m.–12 noon #1050—4 hours

Midnight Sunflower
Judy Ribitch

Intermediate—\$50.57
Acrylic, Wood Cradle Board, 6" x 6"

Learn to paint a realistic sunflower.



WEDNESDAY 8 a.m.–12 noon #1060—4 hours

Batty
Doris Santore

Beg./Int.—\$43.13
Acrylic Mixed Media, Wood Base & Styrofoam incl. all embellishments, Body 10" tall

Learn to create a decorative figure from QuikWood, styrofoam and paint! Lots of fun!



WEDNESDAY 8 a.m.–12 noon #1070—4 hours

INTRO 101—OILS

Oils 101: Dazzling Poinsettia
Nancy Scott, CDA

Beginner—\$39.94
Oil, Wood Ornament, 5" x 7"

Learn to paint in oils—only four brushes required!



WEDNESDAY 8 a.m.–12 noon #1080—4 hours



Winter Farm Scene *Donna Scully*
Beg./Int.—\$50.57 Acrylic, Canvas, 5" x 7"
We will be covering floating, mop brush techniques, and drybrush techniques.

WEDNESDAY 8 a.m.–12 noon #1090—4 hours



Penguin Pals *Rebecca Trimble*
Intermediate—\$49.50

Acrylic, (2) Wood Plaques, 5" x 9" & 5" x 7"
A two-piece Christmas cutie, learning drybrushing.

WEDNESDAY 8 a.m.–12 noon #1100—4 hours

INTRO 101—ACRYLICS

Acrylics 101
Christine Watson

Beginner—\$39.94
Acrylic, Wood Ornament incl. manual & brush, 4" x 6"

Have fun learning some basics while painting a beautiful ornaments. A new method of stenciling will be included in the class.



WEDNESDAY 8 a.m.–3 p.m. #1110—6 hours



Guardian Angel Sampler *Lynne Andrews*

Beg./Int.—\$51.13

Acrylic, Small Plaque incl. White pen, 10" x 6.5" x 3/8"
When we are done, you will feel like you stitched this sweet piece!

WEDNESDAY 8 a.m.–3 p.m. #1120—6 hours



OMG It's Santa!
Judy Coates

Intermediate—\$53.25
 Acrylic, Wood Door Hanger,
 7.5" x 23"

Have fun with these cute little mice plus lots of drybrushing.

WEDNESDAY 8 a.m.–3 p.m. #1130—6 hours



Dad's Barn *Mark Polomchak*

Beg./Int.—\$71.32

Watercolor, WC Board incl. toothbrush & sponge & towel,
 15" x 20"

Watercolor step by step using a nylon sponge to paint the trees and a kitchen sponge for blending.

WEDNESDAY 8 a.m.–5 p.m. #1140—8 hours



Witch Stamp
Jill Fitzhenry

Advanced Intensive Study—\$68.57
 Acrylic, MDF Plaque,
 12" x 9"

Intensive Study of an old woman's face and hand and the green skin glow of a witch and a glass bottle. Learn to blend with acrylics to create the look of oils.

WEDNESDAY 1 p.m.–5 p.m. #1150—4 hours



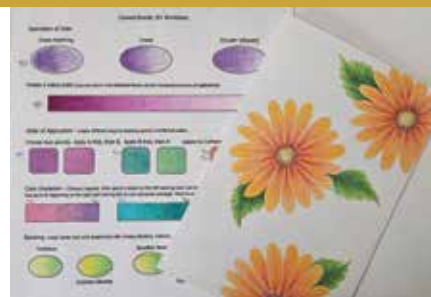
Fall Cardinals
Cindy Makowski

Beginner—\$67.57
 Scratch Art with Watercolor Tints,
 Scratch Board incl. all tools, 8" x 10"

Scratch this pair of love birds in a beautiful fall setting. Learn the importance of scratching directionally for effect, and adding color without painting each stroke.

WEDNESDAY 1 p.m.–5 p.m. #1160—4 hours

INTRO 101—Colored Pencil



Colored Pencil 101 *Julie Talarski*

\$34.63 Colored Pencil, Card Stock, 8.5" x 11"

Introduction to colored pencils. Learn some basic color application and blending techniques and then apply those skills to create a greeting card. All materials provided for use in class—a good opportunity to experience a new medium without investing in new supplies.

WEDNESDAY 1 p.m.–8 p.m.

#1170—6 hours

Winter Fraktur
Barbara Boardman

Beg./Int.—\$56.44
Acrylic & Colored Pencil,
Etched WC Paper,
8" x 10"

*Create this beautiful
Fraktur using acrylic paint,
then shade and define
with colored pencils.*



WEDNESDAY 1 p.m.–8 p.m.

#1180—6 hours

Gold Star Woolens
*Cynthia Erekson
& Mary Annunziato*

Beg./Int.—\$86.14
Acrylic & Wool, Tin Pail/
Wood Santa, 8.5" x 5"/
5.5" x 4.5"

*Learn to make pine boughs by
fringing and twirling wool strips.
Add twisted peppermint sticks,
pinecones, magnolia leaves,
a beautiful poinsettia and a
painted "Santa on a Stick."
A paint-embellished tin pail
adds a cozy homespun look.*



WEDNESDAY 1 p.m.–8 p.m.

#1190—6 hours



Halloween Party *Holly Hanley*

Beg./Int./Advanced—\$63.88
Acrylic, Canvas incl. embellishments, 10" x 20"
*Use drybrushing techniques to create this fun Halloween piece
just in time for the spooky season!*

WEDNESDAY 1 p.m.–8 p.m.

#1200—6 hours



The Regatta *Margit Hartl*

Intermediate/Advanced—\$55.38
Acrylic, Masonite Board, 10" x 20"
*A sailors delight, a spectators awesome delight!
Learn to create a soft landscape the easy way.*

WEDNESDAY 1 p.m.–8 p.m.

#1210—6 hours

Lisbon Beauties
Fran Mittelstet

Intermediate—\$55.38
Watercolor, WC Paper,
11" x 15"

*This class is all about
painting leaves in different
lighting conditions: sun,
shade etc. It is finished by
adding hibiscus flowers
and bud and a soft cloudy
background.*



WEDNESDAY 1 p.m.–8 p.m.

#1220—6 hours



Flutter By Fantasy *Linda O'Connell, TDA*

Intermediate—\$74.50 Acrylic,
Wood Night Light, 9" x 5" x 3.5"
*Unique new surface. Design packed with techniques.
This night light has an interchangeable panel,
which can be changed with different designs.*

WEDNESDAY 1 p.m.–8 p.m.

#1230—6 hours



Not So Still Life Carol Spohn

Beg./Int.—\$61.75 Watercolor, WC Paper, 15" x 22"

Paint your very own original piece of art loosely in vibrant watercolor; background painted using stencils and other methods. Scribbles with water-soluble crayons add excitement. Includes 3 water-soluble crayon pencils and use of the instructor's stencils and other miscellaneous tools.

WEDNESDAY 1 p.m.–8 p.m.

#1240—6 hours



Country Stream Lory van Lieshout

Beg./Int.—\$63.88 Acrylic, Canvas Board, 11" x 14"

Paint this beautiful country stream. Learn how to paint trees, rocks and moving water. A few different ways to paint rocks will be taught.

WEDNESDAY 4 p.m.–8 p.m.

#1250—4 hours



The Cardinals Mark Polomchak

Beg./Int.—\$65.44 Watercolor, WC Board incl. toothbrush, sponge & towel, 15" x 20"

WEDNESDAY 4 p.m.–8 p.m.

#1260—4 hours



Victorian Bliss
Linda Sharp, MDA

Intermediate—\$41.00
Acrylic, Wood Scroll Top
Ornament, 5.25" x 8" x
.125"

We'll be painting roses in three colors and a scroll top ornament and embellished with daisies, scrolls and cross-hatching.

WEDNESDAY 4 p.m.–8 p.m.

#1270—4 hours



Witchy Gnome
Rebecca Trimble

Intermediate—\$45.25
Acrylic, Large Wood
Ornament, 8"

A Halloween cutie;
working on drybrushing.

WEDNESDAY 6 p.m.–10 p.m.

#1280—4 hours

INTRO 101—WATERCOLOR



Watercolor 101 David Bailey

Beginner—\$61.19 Watercolor, Pebble Board, 15" x 20"

This is a must class for beginners. Learn the basic brush strokes. How to load the brush properly and more. You will be on your way to painting like a pro after this class.

WEDNESDAY 6 p.m.–10 p.m.

#1290—4 hours

Red Rose
Maureen Baker

Intermediate—\$55.88
Acrylic, Hardboard,
12" x 12" sq.

Let's paint red!



WEDNESDAY 6 p.m.–10 p.m.

#1300—4 hours



Winter Cardinal *Janice Cormier*

Beg./Int.—\$43.13

Acrylic, Canvas, 8" x 10"

Learn drybrushing and stroking feathers for a realistic bird.

Please be an **A+ student** and bring the appropriate supplies to class! You will find a list of **Basic Supplies by Medium** on **page 33**. You will be expected to have these supplies with you. If your teacher has requested **specific supplies** beyond this list, they are listed on **pages 34–36** by class number.

Feel free to contact your teachers before Convention using the contact info on page 39 if you have specific questions. Thank you for studying up on the supplies that will help to make your class experience successful.

P.S. We are a friendly bunch, and you can often borrow from a neighbor in a pinch :)

Back by popular demand!

Friday Night Italian Buffet

5:00 p.m.–7:00 p.m., \$25, all inclusive!

*Make your reservations through class registration
and your Friday night dinner plans are set.*

*Chicken Parmigiana, Vegetable Lasagna, Meatballs,
Garden Salad, Garlic Bread Sticks, and
Cupcakes will be available in the hotel courtyard...
avoid the lines at local restaurants!*

Tickets must be purchased in advance.

Intro 101 Try Me! Classes

These classes introduce a new medium or artform to new painters and to experienced painters who want to give something new a try.

Check out our offerings in Watercolor, Acrylic, Oil, and Colored Pencil...

Trying something new is good for you!

THURSDAY 8 a.m.–10 a.m.

#2010—2 hours



Snazzy Night Lights *Barbara & Roland Bordelon*

Beg./Int.—\$39.91 Etched Glass/Colored Pencils,
(2) Fired Glass Night Lights incl. stencils, 4" x 5"
Learn how to etch glass and enhance with colored pencils.

THURSDAY 8 a.m.–10 a.m.

#2020—2 hours



Koala Ornament
Jill Fitzhenry

Beg./Int.—\$37.25
Acrylic, Wood Ornament,
7" x 4"

Learn to paint the unique ears and fur on this adorable Koala. Plus a quick and easy way to make pine needles. All sparkled up with glitter around the edges.

THURSDAY 8 a.m.–10 a.m.

#2030—2 hours



Delicate Spring
Margit Hartl

Beginner—\$38.32
Glass Paint, Candle Holder
incl. 10" candle, 7" x 3.5"

Warning! You may fall asleep, it's that easy! Learn to paint on round glass to create this delicate piece!

THURSDAY 8 a.m.–10 a.m.

#2040—2 hours



Sammy Snowman *Lory vanLieshout*

Beginner—\$40.44
Acrylic Mixed Media, Gourd incl. QuikWood, 3" x 3"
Even snowmen like sliding down hill! Use a small gourd and QuikWood to create this fun snowman ornament.

THURSDAY 8 a.m.–12 noon

#2050—4 hours



Luminous Lavender
Janice Fusco

Beginner—\$52.69
Acrylic, Mandala Plaque,
10" Round incl. dotting
tools & stencil set

An introduction to the world of Dot Mandala. Learn layout techniques, how to create uniform dots, and all the tips and tricks to master the mystery of "Dotting."

THURSDAY 8 a.m.–12 noon

#2060—4 hours



Bee the Sunshine
Marlene Kreutz, CDA

Beginner—\$50.57
Acrylic, Wood
Thermometer Board,
7.5" x 9"

Create a realistic bee and sunflowers petals with delicate linework.

THURSDAY 8 a.m.–12 noon #2070—4 hours

Daisies & Lilies
Dorothy Pullo, CDA

Beg./Int.—\$52.69
Acrylic, Wood Bombay
Box, 5.75" sq.

Lots of fun painting techniques to explore and enjoy. Flick in the daisy petals, add highlights to the lilies with a stencil, stipple in flower centers, and finish it off with dots made with the end of your brush.



THURSDAY 8 a.m.–12 noon #2080—4 hours



Cardinal and Holly *Kathleen Swigon*

Beginner—\$50.57
Colored Pencil, Linen Table Runner incl. Identi Pen, 16" x 45"
Try colored pencils on fabric for a unique technique in painting.

THURSDAY 8 a.m.–12 noon #2090—4 hours

Puppet Master
Maxine Thomas

Intermediate—\$53.75
Acrylic, Wood
Stocking incl. stand,
16" x 11" x 3/8"

Who doesn't love Santa with toys to share with the little ones.



THURSDAY 8 a.m.–3 p.m. #2100—6 hours

Floral Candle and Plate
Paulette DiGesare

Intermediate—\$58.57
Acrylic, Pillar Candle
& Wooden Base,
4" x 8" Candle
& 8" Wood Base

Learn tips and tricks to painting on wax candle. You will want to paint them for all occasions.



THURSDAY 8 a.m.–3 p.m. #2110—6 hours



Purple Passion *Shannon Miller, CDA*

Intermediate—\$58.57
Acrylic, Oval Framed Tray, MDF, 11.75" x 7.75"
Soft, eye-catching florals and strokes with a metallic faux finish frame.

THURSDAY 8 a.m.–3 p.m. #2120—6 hours

Stars
Mark Polomchak

Beg./Int.—\$71.32
Watercolor,
WC Board incl.
toothbrush & sponge
& towel, 15" x 20"

Evening glow with mist and stars.



THURSDAY 8 a.m.–3 p.m.

#2130—6 hours



Where's My Hat?

Judy Ribitch

Intermediate—\$61.75
Acrylic, Wood Cradle Board, 12" x 12" sq.

Learn to create woodgrain to enhance your paintings.

THURSDAY 8 a.m.–3 p.m.

#2140—6 hours



Winter Glow *Nancy Scott, CDA*

Intermediate—\$53.25 Oil, Canvas, 11" x 14"

Paint the warm colors of winter in this serene landscape.

THURSDAY 11 a.m.–6 p.m.

#2150—6 hours



Morning Stroll

Marco Aguilar

Intermediate—\$63.88
Acrylic, Canvas Panel, 11" x 14"

Learn techniques to creating the illusion of wet sand, sea foam, and a cute sandpiper bird in a sunrise color palette.

THURSDAY 11 a.m.–6 p.m.

#2160—6 hours



Daisy Barn *David Bailey*

Beg./Int.—\$69.19 Watercolor, Pebble Board, 15" x 20"

It's spring time in the country. This is a colorful painting with beautiful Daisies covering the country side.

THURSDAY 11 a.m.–6 p.m.

#2170—6 hours



A Floral Box *Jeanne Paglio*

Beg./Int.—\$61.75

Mixed-Media Acrylic, Wooden Box, 5" x 8" x 3"

Zentangle floral on a box that can hold collectibles, jewelry and more.

THURSDAY 11 a.m.–6 p.m.

#2180—6 hours



Holly Plate with Strokes *Mary Svenson, CDA*

Intermediate—\$79.82 Acrylic, Round Wood Plate, 10"

Paint an attractive piece using drybrush and sideload techniques complete with a strokework border.

THURSDAY 1 p.m.–5 p.m.

#2190—4 hours

Acorn Angel

Lynne Andrews

Beg./Int.—\$39.94
Acrylic, MDF Laser Cut
Ornament,
6.25" x 1" x 4.5"



THURSDAY 1 p.m.–5 p.m.

#2200—4 hours

Angel Annalise

Barbara Boardman

Beg./Int.—\$48.44
Acrylic & Colored Pencil,
Etched WC Paper,
8" x 10"

*Create this beautiful
angel using acrylics
& colored pencils
and embellish with
rhinestones & glitter.*



THURSDAY 1 p.m.–5 p.m.

#2210—4 hours

Join the Party

Judy Coates

Intermediate—
\$31.44
Acrylic, (3) Wood
Ornaments, 3" x 5"
& 2.5" x 2"

*Soft, sweet snowmen
all drybrushed. Love
those hats!*



THURSDAY 1 p.m.–5 p.m.

#2220—4 hours

Frosty Friends

Shopping Bag

Holly Hanley

Beg./Int./Adv.—\$52.69
Acrylic, Fabric Bag,
12" x 12" approx.

*You'll have some cute friends
to shop with after this
fun class!*



THURSDAY 1 p.m.–5 p.m..

#2230—4 hours

Wintery Night

Linda Sharp, MDA

Intermediate—\$43.13
Acrylic, (3) Wood
Ornament Set,
5.5" x 5.5" x .125"

*Wintery ornaments
with just two colors,
focusing on shading
the edges and
embellishing with
linework, scrolls, and
strokes along with
a bit of sparkle.*



THURSDAY 4 p.m.–6 p.m.

#2240—2 hours



Pansy Maureen Baker

Beg./Int.—\$31.94 Media Acrylic, WC Paper, 8" x 10"
*Some loose techniques in developing a pretty flower
and some different techniques on leaves.*

THURSDAY 4 p.m.–6 p.m.

#2250—2 hours



Glass Christmas Ornaments

Gloria Greaves

Beginner—\$26.63
Alcohol Ink, (4) Glass Ornaments, 4" ea.

Come have some fun as you learn the joys of using Alcohol Inks. It will open a world of opportunities, I guarantee!

THURSDAY 4 p.m.–6 p.m.

#2260—2 hours



BRR... It's Cold

Judy Ribitch

Intermediate—\$34.07
Acrylic, MDF Shelf Sitter, 5" x 8"

This chubby little penguin is trying to stay warm. Learn to enhance your lettering.

THURSDAY 4 p.m.–6 p.m.

#2270—2 hours



Farmhouse Wreath Ornament

Kathy Van Horne

Beginner—\$35.13
Acrylic, Wood Ornament incl. beads, 5.5"

Learn to make a variety of natural looking leaves. Create shear floats of color to lend depth and make antique looking beads. Adapt to a variety of surfaces and décors.

Calling All Shoppers!

Thursday 6:30–9:00 p.m.
Best Western Royal Ballroom

Special shopping hours for registered attendees—
a ballroom full of what painters love most:
brushes, tools, paints, patterns, surfaces
and inspiration!

Come see what's new
and replenish your favorites!
Wear your name badge for entry.



*We look forward to celebrating
26 years of inspired decorative painting
and great art friendships with you!*



FRIDAY 8 a.m.–12 noon

#3010—4 hours



Follow the Sun *Linda O'Connell, TDA*

Int.—\$55.88 Fabric Paint, Canvas Bag, 24" x 15" with handles
Large canvas bag is perfect for any purpose. Learn to use a filbert wave brush to create the perfect flower. Painting on fabric is a great way to embellish clothes, bags, and home décor. You'll learn techniques and tips so you can create one of a kind things in the future.

FRIDAY 8 a.m.–12 noon

#3020—4 hours



Autumn Glory Tag

Lynne Andrews

Beg./Int.—\$39.94
Acrylic, Wooden Tag,
7" x 4.5"

Nothing small about this piece. So much detail packed into this tag!

FRIDAY 8 a.m.–12 noon

#3030—4 hours



Daisies *David Bailey*

Beg./Int.—\$69.19
Watercolor, Pebble Board, 15" x 20"
Learn to paint beautiful daisies on a dark background!

FRIDAY 8 a.m.–12 noon

#3040—4 hours



Lavender Rose *Marlene Kreutz, CDA*

Beginner—\$44.19
Acrylic Mixed Media, Postcard Panel, 4.5" x 8"
You will learn how to stamp with acrylic, try a little ink stamping, decoupage and the blending of a rose.

FRIDAY 8 a.m.–12 noon

#3050—4 hours



Beginner Stroke Box *Shannon Miller, CDA*

Beginner—\$58.00 Acrylic, Wooden Bombay Box, 6.5" x 5" x 1.5"
Learn basic comma strokes and a simple faux finish in vibrant colors.

FRIDAY 8 a.m.–12 noon

#3060—4 hours

Hummingbird and Flowers

Arlene Newman, CDA

Beginner—\$55.88
Watercolor, WC Paper,
9" x 12"

Learn a casual style to paint birds and flowers in watercolor.



FRIDAY 8 a.m.–12 noon

#3070—4 hours



Watching Nature
Judy Ribitch

Intermediate—\$47.38
Acrylic, MDF Wall
Plaque, 7.5" x 10"

*Learn techniques
to make an interesting
background.*

FRIDAY 8 a.m.–12 noon

#3080—4 hours



Count Batcula
Doris Santore

Beg./Int.—\$43.13
Acrylic Mixed Media,
Wood Base &
Styrofoam incl. all
embellishments,
9.25" tall

*Learn to create
a decorative figure
from QuikWood,
styrofoam and paint!
Lots of fun!*

FRIDAY 8 a.m.–12 noon

#3090—4 hours



Our First Christmas Together *Nancy Scott, CDA*

Intermediate—\$45.25 Acrylic, Wood Plaque, 14" x 6"

The cute cardinal couple spending their 1st Christmas together epitomizes the loving spirit of the season.

FRIDAY 8 a.m.–12 noon

#3100—4 hours



Bountiful Blooms Ornaments
Linda Sharp, MDA

Intermediate—\$43.13
Acrylic, (3) Wood
Ornament Set,
5.5" x 5.5" x .125"

*A set of three ornaments
painted with vibrant
colors and whimsical
flowers.*

FRIDAY 8 a.m.–3 p.m.

#3110—6 hours



Midnight Encounter
Marco Aguilar

Adv. Intensive
Study—\$63.88
Acrylic, Canvas Panel,
11" x 14"

*Create shapes using
negative space, and
use drybrushing to
create depth of field
and contours in
this dramatic portrait.*

FRIDAY 8 a.m.–3 p.m.

#3120—6 hours



Iris
Maureen Baker

Intermediate—\$63.88
Media Acrylic, Canvas,
12" x 16"

*Bringing a complicated
floral to life.*

FRIDAY 8 a.m.—3 p.m.

#3130—6 hours



Fantasy Flowers *Paulette DiGesare*

Intermediate—\$55.38 Acrylic, Metal Tray, 13"
Enjoy painting this floral using beautiful colors and tints.

FRIDAY 8 a.m.—3 p.m.

#3140—6 hours



Lost Wagon *Mark Polomchak*

Beg./Int.—\$71.32 Watercolor, WC Board incl. toothbrush
& sponge & towel, 15" x 20"
*Watercolor snow scene step by step traditional landscape
featuring and old wagon.*

FRIDAY 1 p.m.—5 p.m.

#3150—4 hours

Roses and Blooms

Linda Sharp, MDA

Intermediate—\$77.13
MUD Texture & Acrylic,
Wood Scroll Top Oval incl.
all MUD supplies,
11.75" x 6.5" x .125"

*This is a MUD class where
students will learn basic MUD
techniques for flowers, leaves
and even a rose.*



FRIDAY 1 p.m.—8 p.m.

#3160—6 hours



Up, Up and Away *David Bailey*

Beg./Int.—\$69.19 Watercolor, Pebble Board, 15" x 20"
*Hot air balloons floating gracefully through the sky.
Learn to apply one color and transition into another.*

FRIDAY 1 p.m.—8 p.m.

#3170—6 hours



Garden Path Quilted Blocks *Barbara Boardman*

Beg./Int.—\$63.88 Acrylic & Colored Pencil,
4 Paper on Wood Blocks, 4" x 4" x 1" ea.

*These fabulous quilt blocks will be created by combining acrylic
paints & colored pencils. So many fun ways to display them!*

FRIDAY 1 p.m.—8 p.m.

#3180—6 hours



Pink Beauty *Debbie Bonnewell, CDA*

Intermediate—\$66.00 Oil, Canvas, 11" x 14"
Learn to create values to define flower petal details three dimensionally.

FRIDAY 1 p.m.–8 p.m.

#3190—6 hours



Red Tulips *Janice Cormier*

Intermediate—\$69.19 Acrylic, Canvas, 12" sq.

Learn how to make a mottled background and paint realistic tulips.

FRIDAY 1 p.m.–8 p.m.

#3200—6 hours



For the Birds *Vicki Ferrusi*

Beg./Int.—\$74.50 Watercolor, WC Paper, 11" x 14"

You can almost see these chickadees flitting around the seeds.

FRIDAY 1 p.m.–8 p.m.

#3210—6 hours



Birch Pond *Margit Hartl*

Int./Adv.—\$53.25 Acrylic, Canvas Board, 9" x 12"

Slow down and enjoy this spot along the road of life.

FRIDAY 1 p.m.–8 p.m.

#3220—6 hours



West Quoddy Lighthouse

Arlene Newman, CDA

Int. Intensive Study—\$69.19
Acrylic, Canvas Panel, 9" x 12"

Learn in depth how to create a snow scene landscape with a lighthouse in snow and a winter stormy sky.

FRIDAY 2 p.m.–9 p.m.

#3230—6 hours



Off to Paint *Linda O'Connell, TDA*

Intermediate—\$61.75 Fabric Paint, Canvas Bag, 20" x 15" or 24" x 15" with handles

Ducks are all the rage. This fun bag is the perfect size to carry your painting supplies. Learn to blend and float on fabric. We will use So Soft and the new Thrift Flip Paint for easy painting.

FRIDAY 4 p.m.–8 p.m.

#3240—4 hours



Peppermint Mitten
Bobbie Campbell, CDA

Int.—\$61.19
Acrylic, Wood/Paper Decoration, 8" x 12"

Learn soft shading and highlighting to create realism & movement using acrylics.

FRIDAY 4 p.m.—8 p.m.

#3250—4 hours



Me and My Shadow *Jane Allen*

Beg./Int.—\$50.57
Acrylic Mixed Media,
QuikWood & Styrofoam,
6" x 2.5" x 2.5"

This is a great introduction to sculpting with QuikWood. You will learn basic sculpting techniques that you can build on to create more complex projects.

FRIDAY 4 p.m.—8 p.m.

#3260—4 hours



Let it Snow Choir *Barbara & Roland Bordelon*

Beg./Int.—\$82.44 Etched Glass/Acrylic/Colored Pencils,
3 pieces Decorative Etched Glass incl. frame, lights,
stencils & Etched Crème kit, 8" x 8"

Learn how to etch glass and use colored pencils & acrylic on it.

FRIDAY 4 p.m.—8 p.m.

#3270—4 hours

Good Witches Welcome *Maxine Thomas*

Intermediate—\$62.25
Acrylic, Wood incl. raffia
& star, 16" x 16" x 3/4"

*Rag doll "good witch"
on what else,
a witches hat.*



FRIDAY 6 p.m.—10 p.m.

#3280—4 hours

Get Carried Away *Cynthia Erekson*

Beg./Int.—\$57.95
Acrylic, Wood Palette on
Wood Cart, 7" x 6" x 3.5"
*We tend to get "carried away"
when we paint, and enter
our own little world! This
folk art "palette pull-toy"
serves as a display for brushes.
Simple woodgraining and
background texture adds
"charm" and "age."
Let painting "Transport You
to Another World!"*



FRIDAY 6 p.m.—10 p.m.

#3290—4 hours



Live Life in Full Bloom *Holly Hanley*

Beginner—\$52.69 Acrylic, Canvas, 12" x 12" sq.
Learn how to paint Hydrangeas in a fun, quick and carefree manner!

FRIDAY 7 p.m.—9 p.m.

#3300—2 hours

Sweet Deer Ornament *Jill Fitzhenry*

Beg./Int.—\$37.25
Acrylic, Wood Ornament,
6.25" x 3.5"

*Paint this simple and sweet
deer face with acrylics.
Learn how to use a wave angle
brush to make pine needles
and a fountain brush to stipple
texture around the edge.
Then glitz it all up with glitter.*





Game Night—*BINGO!*

Friday, 7:00 p.m.–9:30 p.m.

Done with painting for the day but not quite ready to call it a night? Join us in Zachary's for a relaxing evening of fun and friendship, and a little game night competition. Bring your friends, play some cards, enjoy Bingo and mingle. Door prizes galore!

\$15 (light snacks, prizes, surprises)

SATURDAY 8 a.m.–12 noon

#4010—4 hours



Winter Solstice *Anne Hunter*

Intermediate—\$36.75 Acrylic, Canvas Mat, 8" sq.
Paint a peaceful winter landscape with a deer and cardinal for a little added interest.

SATURDAY 8 a.m.–12 noon

#4020—4 hours



Two Pumpkins and a Crow

Annamarie Oke

Beginner—\$51.63
Acrylic, MDF Door Tag,
8" x 18"

I love this piece using the water lily brushes by Dynasty...including the Water Lily #2 Quill.

SATURDAY 8 a.m.–12 noon

#4030—4 hours



Paper Mache Santa

Nancy Scott, CDA

Intermediate—\$39.94
Acrylic, Paper Mache
Gourd, 5" x 4"

This cute little Santa will be a wonderful addition to your Christmas décor.

SATURDAY 8 a.m.–3 p.m.

#4040—6 hours



Oso *Marco Aguilar*

Adv. Intensive Study—\$63.88 Acrylic, Canvas Panel, 11" x 14"
Paint this striking brown bear portrait using the round and dagger brush to create form and shape using negative space techniques. Learn to paint fur and animal eyes.

SATURDAY 8 a.m.–3 p.m.

#4050—6 hours



Stripes and Stones *David Bailey*

Beg./Int.—\$69.19 Watercolor, Pebble Board, 15" x 20"
Paint old Glory standing proudly by a stone wall!

SATURDAY 8 a.m.–3 p.m.

#4060—6 hours

Gathering Nectar
Debbie Bonnewell, CDA

Intermediate—\$61.75
Oil, Multi-Media Board,
9" x 12"

*Learn to layer petals
to define perception
of depth and reality.*



SATURDAY 8 a.m.–3 p.m.

#4070—6 hours

For the Birds
Paulette DiGesare

Intermediate—\$69.19
Acrylic,
Wood Tree & Base,
10" x 16"
Base 3" x 3" x 3"

*The bird seed will keep these
songbirds fed all winter.*



SATURDAY 8 a.m.–3 p.m.

#4080—6 hours



Shades of Grey II *Vicki Ferrusi*

Beg./Int.—\$79.82 Acrylic, Old Hand Saw, 4" x 25" approx.
*Here you go! A sequel to the popular saw we did before!
Join in this fun class and learn how beautiful grey can be!*

SATURDAY 8 a.m.–3 p.m.

#4090—6 hours



Strokes in the Round *Shannon Miller, CDA*

Intermediate—\$67.07 Acrylic, Wooden Plate, 12" round
*Learn soft floats, practice those comma strokes, and line work on this
beautiful dark background.*

SATURDAY 8 a.m.–3 p.m.

#4100—6 hours



Fall Floral Bouquet *Arlene Newman, CDA*

Intermediate—\$69.19 Acrylic, Canvas, 9" x 12"
*Learn several types of flowers and leaves using wet-on-wet
techniques in acrylic with a mottled background.*

SATURDAY 8 a.m.–3 p.m.

#4110—6 hours



Winter Lighthouse *Mark Polomchak*

Beg./Int.—\$71.32 Watercolor, WC Board incl. toothbrush
& sponge & towel, 15" x 20"
Snow scene seascape, misty evergreens and a winter wave.

SATURDAY 8 a.m.–3 p.m.

#4120—6 hours



Bountiful Blooms Bouquet

Linda Sharp, MDA

Intermediate Intensive Study—\$58.57
Acrylic, Wood Box Panel, 6" x 10" x 1"

This delightful and colorful piece has a variety of whimsical flowers and leaf forms in unexpected colors making it very fun to paint.

SATURDAY 8 a.m.–3 p.m.

#4130—6 hours



Button Up

Carol Spohn & Beth Wagner

Beg./Int.—\$58.57
Fabric Paint, incl. all embellishments & supplies. Bring Your Own Pre-Washed White T-Shirt (or fabric item of choice)

Double the instructors, double the fun! Paint with acrylics in an abstract manner. Embellish with provided buttons, ribbons and embroidery floss, making each piece an original piece of art in the style of Pacita Abad. Basic stitching. Hate to sew? Outline with a permanent marker provided.

SATURDAY 9 a.m.–4 p.m.

#4140—6 hours



Quilted Christmas Angel

Lynne Andrews

Beg./Int.—\$55.38 Acrylic, Wooden Angel incl. White pen/Black marker, 14" x 6" x .75"
Join me as we paint or stitch this little beauty. Her lovely dress is quilted.

SATURDAY 1 p.m.–5 p.m.

#4150—4 hours



Autumn Still Life

Nancy Scott, CDA

Beg./Int.—\$45.25 Oil, Canvas Board (frame not incl.), 8" x 10"
These beautiful soft, warm Autumn colors will look lovely in your home all season long.

SATURDAY 1 p.m.–8 p.m.

#4160—6 hours



St. Nick

Marlene Kreutz, CDA

Intermediate—\$63.88
Acrylic, Wood Barrel Santa, 5" x 22"

Drybrushing, floating, stippling and line detail is used to create this St. Nick's face and his robe.

SATURDAY 1 p.m.–8 p.m.

#4170—6 hours



Grace, the Christmas Angel

Kathryn McAllister

Beg./Int.—\$58.57 Acrylic Mixed Media, Wood Cradle Panel incl. all embellishments, 12" x 12"
Image engraved into wood, so no tracing. Background textured with gesso and a stencil. Washes, shading, and dry brushing create vibrant effects. Play with silver gilding, foil application, and bling.

SATURDAY 4 p.m.—8 p.m.

#4180—4 hours



Halloween Duo Carolyn Bacon

Beg./Int.—\$55.88 Acrylic & Ink,
2 Mounted Parchment Paper, 9" x 12" ea.

Learn to paint on paper using gel medium.

Most painters will leave class with two finished projects!

SATURDAY 4 p.m.—8 p.m.

#4190—4 hours

Beachside Christmas Tree Barbara Boardman

Beg./Int.—\$62.25
Acrylic & Colored Pencil,
Wood Tree with
12 Ornaments, Tree
10" Tall x 6"

*A combination of acrylic paints
& colored pencils will be used
to create this tree with
12 removable ornaments.*



SATURDAY 4 p.m.—8 p.m.

#4200—4 hours

Eagle Ornament Jill Fitzhenry

Intermediate—\$45.25
Acrylic, Plastic
Ornament, 3.5"

*Learn my special way to
paint on this dimensional
ornament. Create feathers,
eye and beak unique
to this bald eagle. Learn
my way of varnishing this
type of surface with out
having to use a spray.*



SATURDAY 4 p.m.—8 p.m.

#4210—4 hours



Snow Friends Anne Hunter

Beg./Int.—\$45.79 Acrylic, Wood Scroll Plaque, 5" x 14"

*Paint a heartwarming design of simpler life.
Boy, dog and a snowman. Learn lots of techniques stippling,
dry brushing and color blending to name a few.*

SATURDAY 4 p.m.—8 p.m.

#4220—4 hours

Chilly

Linda O'Connell,
TDA

Beg./Int.—\$53.75
Acrylic,
MDF Door Hanger, 12"

*A great holiday décor design.
Great for your home or
a gift. Work on perfecting
your floats, getting great
cheeks and highlighting
with a drybrush. This guy
will bring a smile to your
face for a long time.*



SATURDAY 4 p.m.—8 p.m.

#4230—4 hours

Under the Stars Mark Polomchak

Beg./Int.—\$65.44
Watercolor, WC Board
incl. toothbrush &
sponge & towel,
15" x 20"

*Simple powerful
watercolor reflections
and finishing under
the nighttime stars.*



SATURDAY 4 p.m.–8 p.m.

#4240—4 hours



Honey Bee Kathleen Swigon

Beginner—\$47.38
Acrylic, Canvas incl.
embellishments, 9" x 11"

*Have fun using only
iridescent paints
to stroke a fantasy
bee design.*

SATURDAY 4 p.m.–8 p.m.

#4250—4 hours



As Sweet As Honey Kathy Van Horne

Beg./Int.—\$77.13 Acrylic, Door Crown incl. small stencil,
11" H x 26" L x 2" D

*Utilize stencils to create a weathered background. Create stroke work
daisies and learn dry brushing techniques to make intense color
variation. Create shear basecoats to make a life-like bee design.
A truly stunning piece that would match any décor.*

SATURDAY 4 p.m.–8 p.m.

#4260—4 hours



Autumn Bouquet Beth Wagner

Intermediate—\$49.50
Acrylic, Canvas Board,
16" x 20"

*Inspired by all the beautiful
new pastel colored pumpkins
at farm stands this autumn.
For those who took my Winter
Bouquet class a few years ago,
this can be used as a sister
project. Special emphasis will
be on shading, highlighting,
and element design.*

SATURDAY 4 p.m.–8 p.m.

#4270—4 hours



Partridge and Pears Christine Watson

Beg./Int.—\$53.75 Acrylic, Tea Towel incl. brush, 20" x 26"

*Learn a totally different take on this vintage design.
Fabric painting has never been so easy!*

SATURDAY 5 p.m.–9 p.m.

#4280—4 hours



Poinsettia of Peace Bobbie Campbell, CDA

Intermediate—\$49.50 Acrylic, Canvas incl. snowflakes, 6" x 8"
*Learn how to attach paper to the surface for a beautiful background
as well as how to shade and highlight softly.*

SATURDAY 6 p.m.–10 p.m.

#4290—4 hours



Humming Bird and Hibiscus Cindy Makowski

Beginner—\$67.57
Acrylic, Turkey Feather incl.
felt, beads, 10"–12"

*So much to learn, not only how
to paint on the feather, but how
to paint the feathers of the
hummingbird and the petals
of the flower.*

*Enjoy one of our
colorful classes
on Sunday morning
before heading
home...*

SUNDAY 8 a.m.–12 noon

#5010—4 hours



The Whale *Carolyn Bacon*

Intermediate—\$61.19 Acrylic, Wooden Whale Plaque, 18" x 11"
Learn to paint on wood using gel medium. The wood piece has an insert where we will paint the scene. Most will finish project!

SUNDAY 8 a.m.–12 noon

#5020—4 hours

Giraffe

David Bailey

Beg./Int.—\$61.19
Watercolor, Pebble Board, 15" x 20"

*A young giraffe snacking on twigs and leaves.
Learn to paint wild life.*



SUNDAY 8 a.m.–12 noon

#5030—4 hours



Spring Hummer *Barbara & Roland Bordelon*

Beg./Int.—\$77.13 Etched Glass/Colored Pencils, Fired Bent Glass incl. stencil & Etching Crème kit & stand, 12" x 5"
Learn how to etch glass and use colored pencils on it.

SUNDAY 8 a.m.–12 noon

#5040—4 hours

Victorian Christmas Tree
Paulette DiGesare

Beg./Int.—\$47.38
Acrylic, Wood Tree & Metal Tile and Base, 10" x 12"

You will definitely want to add this to your Christmas décor or give to a favorite friend.



SUNDAY 8 a.m.–12 noon

#5050—4 hours

Jingle Bell Snowman
Jill Fitzhenry

Intermediate—\$45.25
Acrylic, Wood Ornament, 6.25" x 3.5"

Lots of fun colors! Also lots of fun techniques to learn; stippling, double loading, floating, dry brushing and blending. You will be given a variety of options to use for shading and highlighting...find the one easiest for you.



SUNDAY 8 a.m.–12 noon

#5060—4 hours



Poinsettia Banner
Gloria Greaves

Beg./Int.—\$36.75
Pen & Ink/Oil Rouging,
Canvas Door Hanging incl.
Pitt pen, 9.5" x 11"

*Not your ordinary pen
and ink with oils project.
You will be using colored
Pitt Pens with brush tips.
Come and learn!*

SUNDAY 8 a.m.–12 noon

#5070—4 hours



Snow Much Fun
Holly Hanley

Beg./Int./Adv.—\$55.88
Acrylic, Wood Plaque,
10" x 14"

*Learn how to paint
my dry brushed bears
and snowmen in this fun
& whimsical class!*

SUNDAY 8 a.m.–12 noon

#5080—4 hours



Peace On Earth
Shannon Miller, CDA

Beg./Int.—\$45.25
Acrylic, Wood Doubled
Scroll Square, 4" x 7"

*A beautiful holiday peace
on a unique surface.*

SUNDAY 8 a.m.–12 noon

#5090—4 hours



In Full Bloom *Fran Mittelstet*

Beg./Int.—\$51.63 Watercolor/Mixed Media, WC Paper, 11" x 15"
*Learn to use masking fluid to create lights in the black around
the center. Petals painted using water and gravity to let the paint
run and blend. Your choice to add spray marblizing.*

SUNDAY 8 a.m.–12 noon

#5100—4 hours



**Daisies and
Blue Blossoms**
Arlene Newman
CDA

Intermediate—\$55.88
Acrylic, Canvas Panel,
9" x 12"

*Learn an easy way
to create loose, casual
flowers and leaves
in acrylic.*

SUNDAY 8 a.m.–12 noon

#5110—4 hours



Inspiration *Linda O'Connell, TDA*

Beg./Int.—\$55.88 Acrylic, MDF Door Hanger incl. stencil, 12"
*Door Hangers are such fun, adding beautiful décor to your home. In this
design you'll learn how I use a Mezzaluna Luna to bring
a design to life. Easy techniques for amazing results.*

SUNDAY 8 a.m.–12 noon

#5120—4 hours



Snowy Stream *Mark Polomchak*

Beg./Int.—\$65.44 Watercolor, WC Board incl. toothbrush & sponge & towel, 15" x 20"

Wonderful snow scene featuring sun reflections in the stream and dormant trees.

SUNDAY 8 a.m.–12 noon

#5130—4 hours



Lil Red Church *Rebecca Trimble*

Intermediate—\$49.50 Acrylic, Canvas, 11" x 14"
A great acrylic landscape class learning clouds and foliage.

SUNDAY 8 a.m.–12 noon

#5140—4 hours



Sunshine on a Purse

Beth Wagner

Intermediate—\$51.63
Acrylic, 2 Cell Phone
Fabric Purses, 9" x 4.5"

Use the same palette to create two different "sunny" purses. Special emphasis on shading, highlighting, and creating realistic looking layers.

Make your NET hotel reservations today!

**Call the Best Western Royal Plaza
(508) 460-0700 and be sure to
reference New England Traditions
for the group rate of \$129
(plus applicable state and local taxes).**

**We anticipate a full room block again
this year, so don't delay.**

Back by Popular Demand!

Friday Night Italian Buffet

5:00 p.m.–7:00 p.m., \$25, all inclusive!

*Make your reservations through class registration
and your Friday night dinner plans are set...*

*Chicken Parmigiana, Veggie Lasagna, Meatballs, Garden Salad, Garlic Bread Sticks, and
Cupcakes will be available in the hotel courtyard...avoid the lines at local restaurants!*

To-go option available. Limited to 100.

NET 2024 Swag!

Order now! Waiting for you when you arrive!

Place your order for these useful and high quality mementoes by July 1 with your registration. Quantities are limited. We may sell out before NET, so don't delay!

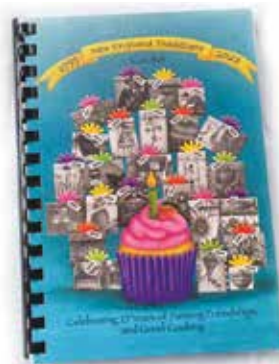


NET 2024 CROW PIN
Metal, 1.25 wide"
\$6.50



INSULATED TUMBLER
"New England Traditions
is my Happy Place"
Double-wall stainless steel
18 oz. \$18.95

**NET Cooks
25th Anniversary
COOKBOOK (2023)**
250+ recipes
Limited supply!
\$12.75



Cookbook cover art by
Eileen "Rocky" Rockwell
©2022 NEDA Inc.

2024 theme art by
Cynthia Erekson
©2023 NEDA Inc.

NET Wreath logo by
Arlene Beck, MDA
©1998 NEDA Inc.



NET 2024 MUG \$12.00
Ceramic, generous 15 oz.



NET FLEECE VEST
100% poly, Dark Navy, Black,
or Iron Gray with embroidered
NET wreath Women's sizes:
S, M, L, XL/1X, 2X, 3X, 4X
\$36.00

Dark
Navy



Iron Gray



NET TOTE \$23.00
Natural 12-oz. canvas, embroidered NET wreath,
burgundy trim, 13" x 18" x 6", 28" straps

See vest sizing info at NewEnglandTraditions.org. Run a bit small. Order up a size.

Teachers!

Please send your submissions for NET 2025 classes
by **January 25, 2025.**

We look forward to another great year with you!

Basic Supplies by Medium

Usual Acrylic Supplies (UAS)

- A good assortment of brushes, including flats, angles, liners, rounds, filberts, mops, and any special brushes that may be listed for a particular class.
- Palette paper
- Tracing paper
- Transfer paper (both light and dark)
- Palette knife
- Stylus
- Paper towels
- Pencil
- Eraser
- Cotton swabs
- Container for water
- Brush cleaner
- Small containers in which to store paint should the project not be finished in class
- Scotch tape or painter's tape
- Optional: hand-held fan, scissors, photo holder, note paper

Usual Oil Painting Supplies

- Graphite paper (gray and white)
- Tracing paper
- Stylus
- Drafting or artist's tape
- Paper towels
- Small containers for turpentine and medium
- Palette paper
- Palette knife
- Brushes (see individual teacher's requests)
- Bristle brushes (these are stiff bristles—not soft—for use on canvases), either flat or filbert, generally small, medium, and large
- Sable brushes for details (synthetics okay for some classes), usually a no. 2, no. 4, no. 8, and larger for larger surfaces
- Liners (long and short)
- Round or filbert if a stroke work class
- Optional: photo holder, note paper, plastic cling wrap to cover palette, aluminum foil for heat-set oils

Usual Colored Pencil Supplies

- Non-wax graphite paper (gray and white)
- Tracing paper
- Stylus
- Drafting or artist's tape, 1
- Battery-operated pencil sharpener
- Battery-operated eraser
- Erasers
- Paper towels
- 6 or 12 C-Thru ruler
- Foam core board or other flat surface for support.
- Optional: hand-held pencil sharpener, scissors, photo holder, note paper

Usual Pastel Supplies

- Chamois cloth
- Paper towels
- Blending stumps
- Eraser (kneadable, white vinyl, etc.)
- Non-wax graphite paper
- Tracing paper
- Razor blade for sharpening
- Drafting or artist's tape, 1
- Stylus

Usual Watercolor Supplies

- Watercolor brushes (1 and 1 1/2 flats, no. 8 or no. 10 round, liner brush)
- 2 water containers
- Non-wax graphite paper (gray and white)
- Masking fluid
- Tracing paper
- Double-ball stylus
- Drafting or artist's tape, 1
- Pencil and sharpener
- White vinyl eraser
- Cotton swabs
- Spray bottle
- Palette
- Paper towels (cut into quarters)
- Hand-held fan
- Scissors
- Toothbrush for spattering
- 6 or 12 C-Thru ruler
- Optional: photo holder, assorted sponges (well rinsed), sea sponges, synthetic sponges, note paper, 1-ounce container for masking fluid (old water bottle cap works well), old no. 1 round brush for masking fluid, small bar of soap for masking fluid.

A Note About Lighting

You may wish to bring a small, battery-operated desk light to enhance the overhead lighting provided in our classrooms.

Special Class Supplies

Please note! Basic Supplies by Medium (acrylics, oils, colored pencils, pastels, and watercolors) are listed on page 33. In addition, you should bring the special items listed below to class. If you have questions about substitutions for these special supplies, please contact the teacher directly (see page 39). Due to lighting conditions in some hotel classrooms, you may want to bring a battery-operated light for your personal use.

- 999 Six assorted size stencil brushes, liner brush in good condition, small “sea silk” sponge, palette knife
- 1010 Usual acrylic supplies
- 1020 Usual wc supplies
- 1030 Asst. good flats—#12 or #14 flat, 3/4" flat, #4 liner, Bobbie’s blenders, usual acrylic supplies
- 1040 Dynasty brushes, stencil pro, 3/4" black gold angle, usual acrylic supplies
- 1050 Domed drybrush, usual acrylic supplies
- 1060 Palette knife, stylus, scissors, good liner brush, needle nose pliers w/wire cutter, usual acrylic supplies
- 1070 Palette knife, chisel blenders #2 & #4, 5/0 sm. spotter, sm. mop, usual oil supplies
- 1080 Sm. angle, mop brush, drybrush, flats, liner, usual acrylic supplies
- 1090 Lunar blenders or bristle flats, usual acrylic supplies
- 1100 3/8" angle, 3/8" flat, usual acrylic supplies
- 1110 Usual acrylic supplies
- 1120 Scharff sm. #2 & #4 round drybrushes, asst. drybrushes, deerfoot brush, #20/0 liner, usual acrylic supplies
- 1130 1" wash, #10 round, #6 long script liner, usual wc supplies
- 1140 1/2" angle, sm. & lg. Jillybean Dirty Dancers, 3/4" flat, #10/0 script, 1/4" rake, #2 round, 1/8" deerfoot, usual acrylic supplies
- 1150 1/4" angle, #2 detail round, sm. acrylic brushes, usual acrylic supplies
- 1160 No supplies needed
- 1170 Prismacolor Pencils: 935 Black, 1090 Kelp Green, 1005 Limepeel, 922 Poppy Red, 945 Sienna Brown, 1088 Muted Turquoise, 1033 Mineral Orange, usual brushes including a 3/4" or 1" flat wash, usual acrylic & pencil supplies.
- 1180 Sm. silk sponge, (5) asst. size stencil brushes, Scharff #222 moon brush #6, usual acrylic supplies
- 1190 Asst. lunar blenders, mini lights, usual acrylics supplies
- 1200 Med. mop, 10" ruler, off set palette knife, #4 & #6 filbert, #1 liner, Black waterproof pen, usual acrylic supplies
- 1210 Script or rigger, #8 or #10 round with a good point, usual wc supplies
- 1220 3/4" wash, #2, #4, #6 & #10 shader, #14 chisel blender, med. & lg. Mezzaluna, #10/0 liner, #2 rigger, #4 sable drybrush, usual acrylic supplies
- 1230 Lg. round brush/quill, cloth rag, ruler, usual wc supplies
- 1240 King art Original Gold 9246 rake fan, usual acrylic supplies
- 1250 1" wash, #10 round, #6 long script liner, usual wc supplies
- 1260 Angle brushes, #10/0 and #20/0 liner, filberts, usual acrylic supplies
- 1270 Lunar blenders or bristle flats, usual acrylic supplies
- 1280 Usual wc supplies
- 1290 Black Gold shaders #6, #10, #14, 1" wash, liner, usual acrylic supplies
- 1300 Lg. stencil or flat brush for drybrushing, usual acrylic supplies
- 2010 Prismacolor pencils: Apple Green, Caribbean Sea, Cobalt Blue, Pink, Deco Pink, Grass Green, Spring Green, Goldenrod, Dark Umber, Colorless Blender, blue tape, paper towels, usual colored pencil supplies
- 2020 3/8" angle, #10/0 script, 1/8" wave angle, 1/8" rake, #1 round, (1/4" dagger optional to apply glitter), usual acrylic supplies
- 2030 #1 liner, #2 filbert, toothpicks, usual acrylic supplies
- 2040 Usual acrylic supplies
- 2050 Compass, 12" ruler, White water soluble marking pencil, pencil sharpener, bubble palette, sm. round or flat brush, cotton swabs, usual acrylic supplies
- 2060 Sm. Mezzaluna, 1/8" & 1/4" angle, #0 & #2 deerfoot, usual acrylic supplies
- 2070 #4, #6 & #8 filberts, 1/2" angle & flat, good liner, usual acrylic supplies
- 2080 Prismacolor Pencils: #935 Black, #926 Carmine Red, #1005 Limepeel, #925 Crimson Lake, #908 Dark Green, #937 Tuscan Red, #916 Canary Yellow, #945 Sienna Brown, #1003 Spanish Orange, #946 Dark Brown, #918 Orange, #938 White, #1033 Mineral Orange, #1080 Beige Sienna, Sakura White Gelly Roll pen, usual cp supplies
- 2090 Asst. mops and drybrushes, usual acrylic supplies
- 2100 Cotton glove, microfiber dust cloth, painter’s tape, ruler, small container of rubbing alcohol, usual acrylic supplies.
- 2110 Plastic wrap, #4 filbert, #12 & #20 flats, #1, #2, & #4 liners, usual acrylic supplies
- 2120 1" wash, #10 round, #6 long script liner, usual wc supplies
- 2130 Domed drybrush, pencil, ruler, usual acrylic supplies
- 2140 Oil blender brushes flats #2, #8 & #12, liner, sm. containers for paint, usual oil supplies
- 2150 Old toothbrush, graphite paper, #5/0 liner, usual acrylic supplies
- 2160 Usual wc supplies
- 2170 01 Black Micron pen, White Sakura gelly roll pen, usual acrylic supplies
- 2180 JS1360 #2, JS 3005 #2 or JS 2010 #2, usual acrylic supplies
- 2190 #4 & #8 LA series 3020 floater, #4 stippler LA series 3014, good asst. of smaller mops, usual acrylic supplies
- 2200 Prismacolor Colored Pencils: 905 Aquamarine, 935 Black, 1076 French Grey 90%, 922 Poppy Red, 945 Sienna Brown, cubbies for mediums, #1 liner, #4 or #6 round, #6 or #8 filbert or flat, 3/4" flat, usual acrylic & cp supplies
- 2210 Scharff sm. #2 & #4 round drybrushes, asst. drybrushes, deerfoot brush, #20/0 liner, usual acrylic supplies
- 2220 Asst. stipplers and lunar blenders, usual acrylic supplies
- 2230 Angle brushes, #10/0 and #20/0 liner, sm. mop, usual acrylic supplies
- 2240 Black Gold shaders #6, #10, #14, 1" wash, liner, usual acrylic supplies
- 2250 Paper towels
- 2260 Domed drybrush, 1/4" deerfoot, usual acrylic supplies
- 2270 #18/0 liner, 3/4" angle, #2 round, #2 filbert, usual acrylic supplies

- 3010 Faux squirrel #8 filbert wave, #6 & #14 sable drybrush, 1/4" & 3/4" deerfoot, 3/4" foliage, 3/4" stencil pro, usual acrylic supplies
- 3020 Usual acrylic supplies
- 3030 Usual wc supplies
- 3040 1/8" & 1/4" angles, 6" ruler, 4H pencil, usual acrylic supplies
- 3050 Plastic wrap, #12 flat, #1 & #4 liners, #6/0 liner, #8 blender, usual acrylic supplies
- 3060 10' x 14" backboard, Scotch magic tape, usual wc supplies
- 3070 Domed drybrush, soft stencil brush, usual acrylic supplies
- 3080 Palette knife, stylus, scissors, good liner brush, needle nose pliers with wire cutter, usual acrylic supplies
- 3090 Usual acrylic supplies
- 3100 Filberts, angles, #3 round, #4 oval dry brush, usual acrylic supplies
- 3110 1/4" dagger, #5/0 liner, White transfer paper, usual acrylic supplies
- 3120 Black Gold shaders #6, #10, #14, 1" wash, liner, usual acrylic supplies
- 3130 Usual acrylic supplies
- 3140 1" wash, #10 round, #6 long script liner, usual wc supplies
- 3150 Old filbert or angle for clean-up, usual acrylic supplies
- 3160 Usual wc supplies
- 3170 Prismacolor Pencils: 935 Black, 906 Copenhagen Blue, 914 Cream, 913 Spring Green, 105 Cobalt Turquoise, sm. filberts, asst. rounds, liners, sm. dry brushes, 3/4" flat, ruler, chalk pencil, cubbies for mediums, usual acrylic & cp supplies
- 3180 Asst. chisel blenders, JoSonja 3/8" mop, usual oil supplies
- 3190 Lg. stencil brush or flat brush for drybrushing, usual acrylic supplies
- 3200 #2 & #6 wc brushes, usual wc supplies
- 3210 1/4" angle, #1 flat, old scruffy brush or med. stencil brush, 1/2" angle shader, #4 or #6 filbert, sm. ruler, usual acrylic supplies
- 3220 3/4" flat or filbert wash, usual acrylic supplies
- 3230 Faux squirrel #2 rigger, #14 chisel blender, 5/8" stencil pro, 3/8" deerfoot, #2, #6, #10 shader, #10/0 liner, 1" oval encaustic, faux squirrel #8 filbert wave, #4 filbert wave, usual acrylic supplies
- 3240 Asst. good flats - #12 or #14 flat, 3/4" flat, #4 liner, sm. deerfoot or scruffy brush, Bobbie's blenders, usual acrylic supplies
- 3250 Sculpting tools, clay blade, silicon glove, wire cutters, round nose pliers, sm. container for extender, usual acrylic supplies
- 3260 Prismacolor pencils: White PC 938, Black PC 935, Warm Grey 30% PC 1052, Orange PC 918, Metallic Silver PC 949, Light Umber PC 941, Crimson Red PC 924, Cerulean Blue PC 103, Colorless Blender, blue tape, paper towels, usual colored pencil & acrylic supplies
- 3270 Asst. mops and drybrushes, usual acrylic supplies
- 3280 1" sponge brush, (4) asst. size stencil brushes, Scharff series 222 moon brush #6, Silver Brush 2411 lettering brush #20/0, usual acrylic supplies
- 3290 Usual acrylic supplies
- 3300 1/4" angle, #10/0 script, 1/4" wave angle, 1/8" rake, #1 round, #4 fountain, #2 shader (1/4" dagger optional to apply glitter), usual acrylic supplies
- 4010 1/2" filbert, 3/8" angle shader, #6 round scumbler, usual acrylic supplies
- 4020 Dynasty Water Lily brush set, #2 quill, usual acrylic supplies
- 4030 Palette knife, pencil, usual acrylic supplies
- 4040 1/4" dagger, #5/0 liner, 3/8" rake, White transfer paper, usual acrylic supplies
- 4050 Usual wc supplies
- 4060 Asst. chisel blenders, JoSonja 3/8" mop, usual oil supplies
- 4070 Sea sponge, sm. snowflake stencil *[optional] stencil for ribbon [Tim Holtz mini plaid *optional] – another sm. stencil pattern can be substituted, usual acrylic supplies
- 4080 1/2" stipple brush, usual acrylic supplies
- 4090 #12 & #20 flats, #0, #1, #2 & #6/0 liners, mop, usual acrylic supplies
- 4100 #6 Fusion filbert, usual acrylic supplies
- 4110 1" wash, #10 round, #6 long script liner, usual wc supplies
- 4120 Filberts, angles, #3 round, #4 oval dry brush, usual acrylic supplies
- 4130 Pre-washed t-shirt, corrugated plastic board or cardboard approx. 15" x 24" to support the fabric, scissors, masking or blue tape, lg. flat/angle white nylon brushes to paint with, usual acrylic supplies including paper towels
- 4140 Usual acrylic supplies
- 4150 Usual oil supplies
- 4160 Sm. Mezzaluna, #0 & #4 deerfoot, usual acrylic supplies
- 4170 Drybrushes, splatter brush, fine tip white acrylic paint marker, cheap chip brush, 5/8" or 7/8" Jack Richeson domed sash brush or similar #8 or #10 Lynne Andrews floater or similar for washes, scissors, usual acrylic supplies (specifically palette knife, paper towels, liner brushes).
- 4180 Usual acrylic supplies
- 4190 Prismacolor Colored Pencils: 935 Black, 947 Dark Umber, 1040 Electric Blue, 1090 Kelp Green, 922 Poppy Red, 945 Sienna Brown, 1054 Warm Grey 50%, sm. liners, sm. rounds, sm. drybrushes, 3/4" flat or wash, cubbies for mediums, usual acrylic & usual colored pencil supplies
- 4200 1/4" angle, #10/0 script, 1/8" rake, #1 round, #6 fountain, usual acrylic supplies
- 4210 1/4" angle shader, #6 & #8 round scumblers, usual acrylic supplies
- 4220 #14 chisel blender, #4, #10 & 1/2" shader, 1/2" & 1" stencil pro, #8 & #12 sable drybrush, xlg. Mezzaluna, #10/0 liner, faux squirrel #2 rigger, usual acrylic supplies
- 4230 1" wash, #10 round, #6 long script liner, usual wc supplies
- 4240 #8 filbert, #0 short liner, #3 or #4 round, usual acrylic supplies
- 4250 #18/0 liner, 1/4" angle, #2 round, #2 & #4 filbert, #2, #4 & #6 drybrushes, usual acrylic supplies
- 4260 Usual acrylic supplies
- 4270 Scharff Classic Spotter series 105 #6, usual acrylic supplies
- 4280 Asst. good flats—#12 or #14 flat, 3/4" flat, #4 liner, Bobbie's blenders, usual acrylic supplies
- 4290 1/4" angle, #2 detail round, sm. acrylic brushes of choice, #8 filbert or #8 wave, usual acrylic supplies
- 5010 Usual acrylic supplies
- 5020 Usual wc supplies
- 5030 Blue tape, paper towels, Prismacolor pencils: Green Grass PC 909, Apple Green PC 912, Pale Vermillion PC 921, Crimson Lake PC925, Crimson Red PC 924, Non Photo Blue OC 919, Deco Pink PC 1014, Spring Green PC 913, White PC 938, Yellow Ochre PC 942, Indigo Blue PC 901, Colorless Blender, usual cp supplies
- 5040 Xacto knife, ruler, usual acrylic supplies
- 5050 1/4" angle, #10/0 script, #1 round, 1/4" deerfoot, #2 shader, usual acrylic supplies

- 5060 No supplies needed
- 5070 Asst. lunar blenders, usual acrylic supplies
- 5080 #12 short shader, #2 filbert, 5/8" angle, #1 & #6/0 liners, usual acrylic supplies
- 5090 Round with good point #8 or #10, script or rigger, usual wc supplies
- 5100 #6 filbert, 3/4" flat, usual acrylic supplies
- 5110 3/4" wash, #2 & #10 shader, #14 chisel blender, large Mezzaluna, #10/0 liner, #2 rigger, usual acrylic supplies
- 5120 1" wash, #10 round, #6 long script liner, usual wc supplies
- 5130 #8 scumbler, bristle flats, usual acrylic supplies
- 5140 Usual acrylic supplies

We Love, Love, Love Our Volunteers!

VOLUNTEER as a class monitor or any one of the dozens of jobs at Convention that lend a PERSONAL TOUCH.

Check YES when registering!

2024 Volunteer Rewards Program

6 hours of service (at Convention) earns the hand-painted NET 2024 Volunteer Pin designed by Convention Artist Cynthia Erikson.

Volunteer coordinators will place you where you are needed most, based on your availability.

Volunteer by contacting our 2024 volunteer coordinator at volunteer@newenglandtraditions.org so she can let you know what jobs would fit in the time you have available.

**Just a few hours
makes a big difference!**



New England Traditions is a production of New England Decorative Artists, Inc., an association of seven painting groups in New England and Upstate New York, whose purpose is to promote decorative painting through cooperation. Together, we are nearly 400 painters strong.

NEDA/NET Officers & Advisors

Kristine Beckman, NEDA President
Gloria Greaves, NEDA Vice President
Dorey Joy, NEDA Executive Secretary
Cheryl Barb, NEDA Treasurer/NET Asst. Treasurer
Eileen "Rocky" Rockwell, NEDA Past President/Advisor
Robin Prout, NET Chair
Kathy Kirch, NET Assistant Chair
Dorey Joy, NET Treasurer

2024 Member Groups and their Representatives:

Berkshire Brushes Decorative Painters
Debbie Chase

Cape Cod Mayflower Decorative Painters Guild, Inc.
Lynn Freer and Barbara Perry

Capitolers Decorative Painters, Inc.
Karen Talbot

Sea Strokes of Maine Decorative Painters
Pam Tomkinson

Tole N Me
Diana Michaud

White Mountain Decorative Painters' Guild
Mary Frambach

Yankee Artist Guild
Terumi Irizawa and Sandy Sauta

Many thanks to our 2024 Class Selection Committee:

Dorey Joy/Selection Chairperson
Sylvia Ulion/Berkshire Brushes
Helen Russell/Capitolers
Lynn Freer/Cape Cod Mayflower
Lynn Barbadora/Cape Cod Mayflower
Penny Nason/Sea Strokes
Diane Michaud/Tole N Me
Jacque Seastedt/White Mountain
Laurie Whitney/Yankee
Kris Beckman/NEDA President
Robin Prout/NET Chair
Cheryl Barb/NEDA Treasurer

Online Registration Worksheet—NET 2024

1 Personal Information

Name _____
 Badge First Name _____
 New to NET, invited by _____
 Street _____
 City _____ State _____ Zip _____
 Phone (home) _____ (cell) _____
 E-mail address _____
 Special classroom accommodations: _____

2 Registration Fees

Full \$90
 Daily \$35 (Sunday \$12)
 Two Days \$70 (Sat/Sun \$47)

If registering daily, please indicate day or days:

Tues/Wed Thurs Fri Sat Sun (\$12)

3 Class/Event Fees

\$ _____

4 Friday Night Specials

Game Night, 7:00–9:30 p.m. _____ ticket @\$15
 Italian Buffet, 5:00–7:00 p.m. _____ ticket @\$25

5 Merchandise

\$ _____

6 GRAND TOTAL

\$ _____

Total all fees from Parts 2, 3, 4 and 5 above.

7 Payment Method

MasterCard Visa Discover

Card Number _____
 Cardholder _____
 Expiration Date ____/____ CVV _____
 Signature _____

Registration cancellations must be requested in writing by July 15, 2024, to receive 50% registration fee refund.

Class and project fees are non-refundable after July 15 (see page 4).

NOTE: \$30 returned check fee. For information:

E-mail: registration@newenglandtraditions.org or call 518-528-2569. (Leave voicemail message if necessary with your callback number).

VOLUNTEERING

Volunteers make NET possible. Please consider monitoring for NET in a class or volunteering elsewhere during your time at NET. Those who volunteer for six hours or more earn a handpainted service pin featuring a colorful element from our theme art.

YES! I WILL BE A CLASS MONITOR Yes No

YES! I WILL VOUNTEER ELSEWHERE Yes No

Day arrive _____ time _____

Day depart _____ time _____

Please help me find a roommate.

3 Class & Special Event Ideas

Class No.	Class Time	Total Fees
Evening—TUESDAY		
Class No.	Class Time	Total Fees
Morning—WEDNESDAY		
1 st Choice		
2 nd Choice		
Afternoon—WEDNESDAY		
1 st Choice		
2 nd Choice		
Evening—WEDNESDAY		
1 st Choice		
2 nd Choice		
Class No.	Class Time	Total Fees
Morning—THURSDAY		
1 st Choice		
2 nd Choice		
Afternoon—THURSDAY		
1 st Choice		
2 nd Choice		
Class No.	Class Time	Total Fees
Morning—FRIDAY		
1 st Choice		
2 nd Choice		
Afternoon—FRIDAY		
1 st Choice		
2 nd Choice		
Evening—FRIDAY		
1 st Choice		
2 nd Choice		
Class No.	Class Time	Total Fees
Morning—SATURDAY		
1 st Choice		
2 nd Choice		
Afternoon—SATURDAY		
1 st Choice		
2 nd Choice		
Evening—SATURDAY		
1 st Choice		
2 nd Choice		
Class No.	Class Time	Total Fees
SUNDAY		
1 st Choice		
2 nd Choice		
		Total Fees
PART THREE TOTAL		

Be sure to include all information above.

Total Fees are listed under each class photo and in special event ads. Calculate highest possible class & event fees above if sending check.

5 NET Swag (see page 32)

2024 MUG QTY: ___ x \$12.00 = _____
 FLEECE VEST QTY: ___ x \$36 Color: _____ Size: _____
 INSULATED TUMBLER QTY: ___ x \$18.50 = _____
 NET TOTE BAG QTY: ___ x \$23.00 = _____
 2024 PIN QTY: ___ x \$ 6.50 = _____
 COOKBOOK QTY: ___ x \$12.75 = _____

PART FIVE TOTAL

Registration CHECKLIST

Did you remember to....

___ **Make your hotel reservation (see page 6)?**

We expect a sold-out room block again this year, so don't delay!

___ **Fill out this registration worksheet completely
so you are ready for online registration?**

___ Decide on your **NET MEMENTOES** to pre-order (see page 32)?

___ Sign up for our **ITALIAN BUFFET ON FRIDAY?**

Advance ticket purchase required! We sell out...

___ Register for Friday's **GAME NIGHT?**

Advance ticket purchase required! We sell out...

___ Volunteer to be a class monitor and/or to help in another area?

Our 2024 Teachers

Artist & Email	Projects on Page	Artist & Email	Projects on Page	Artist & Email	Projects on Page
Marco Aguilar	16, 20, 24	Janice Fusco	14	Doris Santore	9, 20
<i>marcozart@gmail.com</i>		<i>jagfusco@comcast.net</i>		<i>santore_2@msn.com</i>	
Jane Allen	23	Gloria Greaves	18, 30	Nancy Scott, CDA	9, 20, 24, 26
<i>alandjanie@msn.com</i>		<i>ggreaves@nycap.rr.com</i>		<i>nscottcda@gmail.com</i>	
Lynne Andrews	10, 17, 19, 26	Holly Hanley	11, 17, 23, 30	Donna Scully	9
<i>lynne@lynneandrews.com</i>		<i>hollyhanley@gmail.com</i>		<i>donnascullyart@gmail.com</i>	
Mary Annunziato	11	Margit Hartl	11, 14, 22	Linda Sharp, MDA	12, 17, 20, 21, 26
<i>woolypines@comcast.net</i>		<i>margithartl50@gmail.com</i>		<i>lindasharpmda@gmail.com</i>	
Carolyn Bacon	8, 27, 29	Anne Hunter	24, 27	Carol Spohn	12, 26
<i>carolynbacon@gmail.com</i>		<i>creativetouch@earthlink.net</i>		<i>carol@carolspohn.com</i>	
David Bailey	8, 12, 16, 19, 21, 24, 29	Marlene Kreutz, CDA	14, 19, 26	Mary Svenson, CDA	16
<i>alofmyart@aol.com</i>		<i>mfolkart12@gmail.com</i>		<i>tolesampler@comcast.net</i>	
Maureen Baker	13, 17, 20	Cindy Makowski	10, 28	Kathleen Swigon, CDA	15, 28
<i>maureenjbaker@msn.com</i>		<i>cindysbrushstrokes@gmail.com</i>		<i>kswigon@yahoo.com</i>	
Barbara Boardman	11, 17, 21, 27	Kathryn McAllister	26	Julie Talariski	10
<i>brboardman@gmail.com</i>		<i>theteawife@outlook.com</i>		<i>jmt9983@yahoo.com</i>	
Debbie Bonnewell	21, 25	Shannon Miller, CDA	15, 19, 25, 30	Maxine Thomas	15, 23
<i>debb.bonnewell@gmail.com</i>		<i>shannon@shannonmillerpaints.com</i>		<i>stippler@aol.com</i>	
Barbara/Roland Bordelon ...	14, 23, 29	Fran Mittelstet	11, 30	Rebecca Trimble	9, 12, 31
<i>robardesigns@outlook.com</i>		<i>fran_mittelstet@otmail.com</i>		<i>rat954@comcast.net</i>	
Bobbie Campbell, CDA	8, 22, 28	Arlene Newman, CDA	19, 22, 27, 30	Kathy Van Horne	18, 28
<i>bcampbellcda@gmail.com</i>		<i>aarhouse@aol.com</i>		<i>sherwook@yahoo.com</i>	
Judy Coates	10, 17	Linda O'Connell, TDA	11, 19, 22, 27, 30	Lory van Lieshout	12
<i>rcyou@aol.com</i>		<i>lc6058@aol.com</i>		<i>lorypat@hotmail.com</i>	
Janice Cormier	13, 22	Annamarie Oke	8, 24	Beth Wagner	26, 28, 31
<i>countrychoolhse@aol.com</i>		<i>annamarie860@gmail.com</i>		<i>bethwagnerdesigns@yahoo.com</i>	
Paulette DiGesare	15, 21, 25, 29	Jeanne Paglio	16	Christine Watson	9, 28
<i>phdpainter@live.com</i>		<i>JMPag9@aol.com</i>		<i>chriswatsondesigns@hotmail.com</i>	
Cynthia Erikson	8, 11, 23	Mark Polomchak	10, 12, 15, 21, 25, 27, 31		
<i>cynthia.erikson@gmail.com</i>		<i>mark@polomchak.com</i>			
Vicki Ferrusi	22, 25	Dotty Pullo, CDA	15		
<i>vickiferrusi@yahoo.com</i>		<i>rosedapullo@gmail.com</i>			
Jill Fitzhenry	10, 14, 23, 27, 29	Judy Ribitch	9, 16, 18, 20		
<i>jillybeandesigns@aol.com</i>		<i>judyr1231@me.com</i>			

Our teachers are always willing to answer your questions about projects and supplies!



New England Traditions is a production of New England Decorative Artists, Inc.

Sponsoring members:

Berkshire Brushes Decorative Painters, Cape Cod Mayflower Decorative Painters Guild,
Capitolers Decorative Painters, Sea Strokes of Maine Decorative Painters,
Tole 'n ME, White Mountain Decorative Painters' Guild,
and Yankee Artist Guild.

www.newenglandtraditions.org

Transport Yourself to Another World theme artwork designed by Cynthia Erekson ©2023 NEDA
New England Traditions logo designed by Arlene Beck, MDA ©1998 NEDA